

2

SECTION A (30 marks)*Answer all the questions in this section in the spaces provided.*

- 1 State two benefits of a roof on a cattle dip tank. (1 mark)**

.....

.....

.....

.....

- 2 Name four parts of an egg. (2 marks)**

.....

.....

.....

.....

- 3 State four signs of farrowing in pigs. (2 marks)**

.....

.....

.....

.....

- 4 State four causes of cannibalism in a flock of layers. (2 marks)**

.....

.....

.....

.....

3

5 Give four maintenance practices carried out on a pipe wrench. (2 marks)

.....

.....

.....

.....

6 Give four uses of gear box on a tractor. (2 marks)

.....

.....

.....

.....

7 Name four layer breeds of chicken. (2 marks)

.....

.....

.....

.....

8 Give two characteristics that distinguish Berkshire from Duroc breeds of pigs. (2 marks)

.....

.....

.....

.....

9 Give four symptoms of foot and mouth disease in sheep. (2 marks)

.....

.....

.....

.....

- 10 State four reasons why some farmers practise inbreeding in livestock rearing. (2 marks)
-
-
-
-
- 11 Give four harmful effects of lice in pig rearing. (2 marks)
-
-
-
-
- 12 Name four types of housing structures used in poultry rearing systems. (2 marks)
-
-
-
-
- 13 State four ways of controlling pests in bee keeping. (2 marks)
-
-
-
-
- 14 Give four reasons why farmers carry out identification practices in livestock rearing. (2 marks)
-
-
-
-
- 15 Name two species of fish that can be reared in fresh warm water ponds. (1 mark)
-
-

- 16 State four features of a clean milkman during milking. (2 marks)

.....

.....

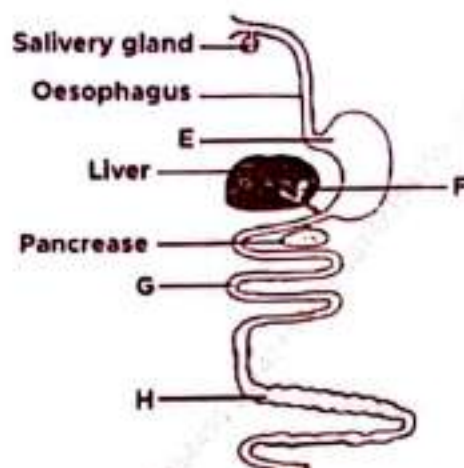
.....

.....

SECTION B (20 marks)

Answer all the questions in this section in the spaces provided.

- 17 The following diagram shows the digestive system of a pig.



- (a) Identify the part labelled:

(i) E (1 mark)

.....

(ii) H (1 mark)

.....

- (b) Give one function of each of the parts labelled F and G.

(i) F (1 mark)

.....

(ii) G (1 mark)

.....

- (c) Give one reason why pigs do not effectively digest grass. (1 mark)

.....

.....

- 18 The following diagram shows chicks suffering from a disease.



- (a) If the chicks' dung contains blood, identify the disease the chicks are suffering from. (1 mark)

.....

- (b) Name the causal organism for the disease. (1 mark)

.....

- (c) Apart from blood stained dung, give three other symptoms shown by chicks suffering from the disease. (3 marks)

.....

.....

.....

- 19 The following diagram shows farm structures for storing crop produce.



- (a) Identify the farm structure labelled.

J (1 mark)

- (b) Give a reason why a farmer should construct and use the farm structure labelled K instead of the one labelled J. (1 mark)

.....

- (c) Give one function of the parts labelled X. (1 mark)

.....

- (d) Give two ways in which the farm structure labelled K is made ready for storing crop produce. (2 marks)

.....

20 The following diagram shows two tools used for land preparation.



- (a) Identify the tool labelled L. (1 mark)
-
- (b) State two conditions that will make a farmer to use the tool labelled M instead of the tool labelled L. (2 marks)
-
-
- (c) State two maintenance practices for the tool labelled L. (2 marks)
-
-

SECTION C (40 marks)

Answer any two questions from this section in the space provided after question 23.

- 21 (a) Explain five ways of controlling diseases on a goat rearing farm. (10 marks)
- (b) Describe the life cycle of round worms (*Ascaris spp*). (10 marks)
- 22 (a) Explain the requirements of a good poultry house for chicken rearing. (15 marks)
- (b) Explain five factors that influence the siting of a calf pen. (5 marks)
- 23 (a) Explain five factors considered when selecting a breeding stock. (5 marks)
- (b) Describe five ways of marketing beef cattle in Kenya. (5 marks)
- (c) Give the function of any five parts of an ox-plough. (10 marks)